

Capacidad de Levantamiento

Modelo TMS475

50 TON

R50-A

34 ft. - 116 ft. BOOM

EL ESTABILIZADOR TOTALMENTE EXTENDIDO - SOBRE LOS COSTADOS

Radio en pies	Longitud del Boom en Pies							Power Pin. Fly & 85 ft.	84 ft. + 32 ft. Ext.5	32 ft. Ext. & 110 ft
	*35	40	45	55	65	75	85			
10	100.000 (71)	74.000 (73.5)	72.000 (75.5)							
12	90.000 (67.5)	70.000 (70.5)	67.500 (73)	64.000 (76.5)						
15	72.000 (62.5)	63.700 (66)	61.000 (69)	55.000 (73)	44.700 (76)					
20	53.000 (52.5)	52.200 (57.5)	49.800 (62)	44.000 (67.5)	37.900 (71)	35.000 (74)	31.000 (76.5)			
25	39.150 (41.5)	39.150 (48.5)	39.150 (54)	36.300 (61.5)	31.900 (66)	29.200 (70)	27.500 (73)	20.000 (77)	17.500 (76.5)	
30	27.300 (26)	27.300 (38)	27.300 (46)	27.300 (55.5)	27.000 (61.5)	25.000 (66)	23.900 (69)	17.700 (75)	16.440 (74.5)	
35		20.900 (23.5)	20.900 (36)	20.900 (49)	20.900 (56.5)	20.900 (61.5)	20.500 (65.5)	15.200 (72.5)	14.100 (72)	9.600 (77)
40			16.850 (22)	16.850 (41.5)	16.850 (51)	16.850 (57)	16.850 (61.5)	13.200 (69.5)	12.400 (70)	8.340 (74.5)
45				13.430 (32.5)	13.430 (45)	13.430 (52)	13.430 (57.5)	11.600 (66.5)	11.100 (67)	7.540 (72.5)
50				10.920 (20)	10.920 (38)	10.920 (47.5)	10.920 (53.5)	10.300 (63.5)	10.000 (64.5)	6.830 (70.5)
55					8.930 (30)	8.930 (42)	8.930 (49)	9.200 (60.5)	9.130 (61.5)	6.240 (68)
60					7.330 (18.5)	7.330 (35.5)	7.330 (44.5)	8.250 (57.5)	8.380 (59)	5.710 (66)
65						5.870 (28)	5.870 (39.5)	7.420 (54.5)	7.680 (56)	5.240 (63.5)
70						4.530 (17.5)	4.530 (33.5)	6.360 (51)	6.400 (53)	4.800 (61.5)
75							3.360 (26.5)	5.290 (47.5)	5.320 (49.5)	4.420 (59)
80							2.260 (16.5)	4.350 (43.5)	4.460 (46)	4.070 (56.5)
85								3.650 (39.5)	3.710 (42.5)	3.740 (54)
90								3.020 (35)	3.040 (38.5)	3.440 (51.5)
95								2.460 (30)	2.500 (34.5)	3.160 (49)
100								1.900 (29.5)	2.070 (30)	2.620 (46)
105								1.430 (15)	1.720 (24.5)	2.120 (43)
110									1.500 (17)	1.730 (39.5)
115										1.380 (36.5)
120										1.040 (32.5)

A6-829-002754 & -002760

Capacidad de Levantamiento

Modelo TMS475

50 TON

R50-A

EL ESTABILIZADORES TOTALMENTE EXTENDIDO - SOBRE LA PARTE TRASERA

Radio en pies	Longitud del Boom en Pies							Power Pin. Fly & 85 ft.	84 ft. + 32 ft. Ext.	32 ft. Ext. & 110 ft.
	*34	40	45	55	65	75	85			
10	100.000 (71)	74.000 (73.5)	72.000 (75.5)							
12	90.000 (67.5)	70.000 (70.5)	67.500 (73)	64.000 (76.5)						
15	72.000 (62.5)	63.700 (66)	61.000 (69)	55.000 (73)	44.700 (76)					
20	53.000 (52.5)	52.200 (57.5)	49.800 (62)	44.000 (67.5)	37.900 (71.5)	35.000 (74)	31.000 (76.5)			
25	38.630 (41.5)	38.630 (48.5)	38.630 (54)	36.300 (61.5)	31.900 (66)	29.200 (70)	27.500 (73)	20.000 (77)	17.500 (76.5)	
30	27.010 (26)	27.010 (38)	27.010 (46)	27.010 (55.5)	27.000 (61.5)	25.000 (66)	23.900 (69)	17.700 (75)	16.400 (74.5)	
35		19.610 (23.5)	19.610 (36)	19.610 (49)	19.610 (56.5)	19.610 (61.5)	19.610 (65.5)	15.200 (72.5)	14.100 (72)	9.600 (77)
40			14.790 (22)	14.790 (41.5)	14.790 (51)	14.790 (57)	14.790 (61.5)	13.200 (69.5)	12.400 (69.5)	8.340 (74.5)
45				11.770 (32.5)	11.770 (45)	11.770 (52)	11.770 (57.5)	11.600 (66.5)	11.100 (67)	7.540 (72.5)
50				9.220 (20)	9.220 (38)	9.220 (47.5)	9.220 (53.5)	10.300 (63.5)	10.000 (64)	6.830 (70.5)
55					7.540 (30)	7.540 (40)	7.540 (49)	9.200 (60.5)	9.190 (61.5)	6.240 (68)
60					6.010 (18.5)	6.010 (35.5)	6.010 (44.5)	7.910 (57.5)	8.030 (58.5)	5.710 (66)
65						4.720 (28)	4.720 (39.5)	6.430 (54.5)	6.490 (55.5)	5.240 (63.5)
70						3.680 (17.5)	3.680 (33.5)	5.150 (51)	5.210 (53)	4.800 (61.5)
75							2.750 (26.5)	4.070 (47.5)	4.130 (49.5)	4.420 (59)
80							1.920 (16.5)	3.250 (43.5)	3.430 (46)	4.070 (56.5)
85								2.590 (39.5)	2.760 (42.5)	3.640 (54)
90								1.960 (35)	4.630 (38.5)	2.960 (51.5)
95								1.360 (30)	1.810 (34.5)	2.350 (49)
100									1.310 (30)	1.760 (46)
105										1.090 (43)

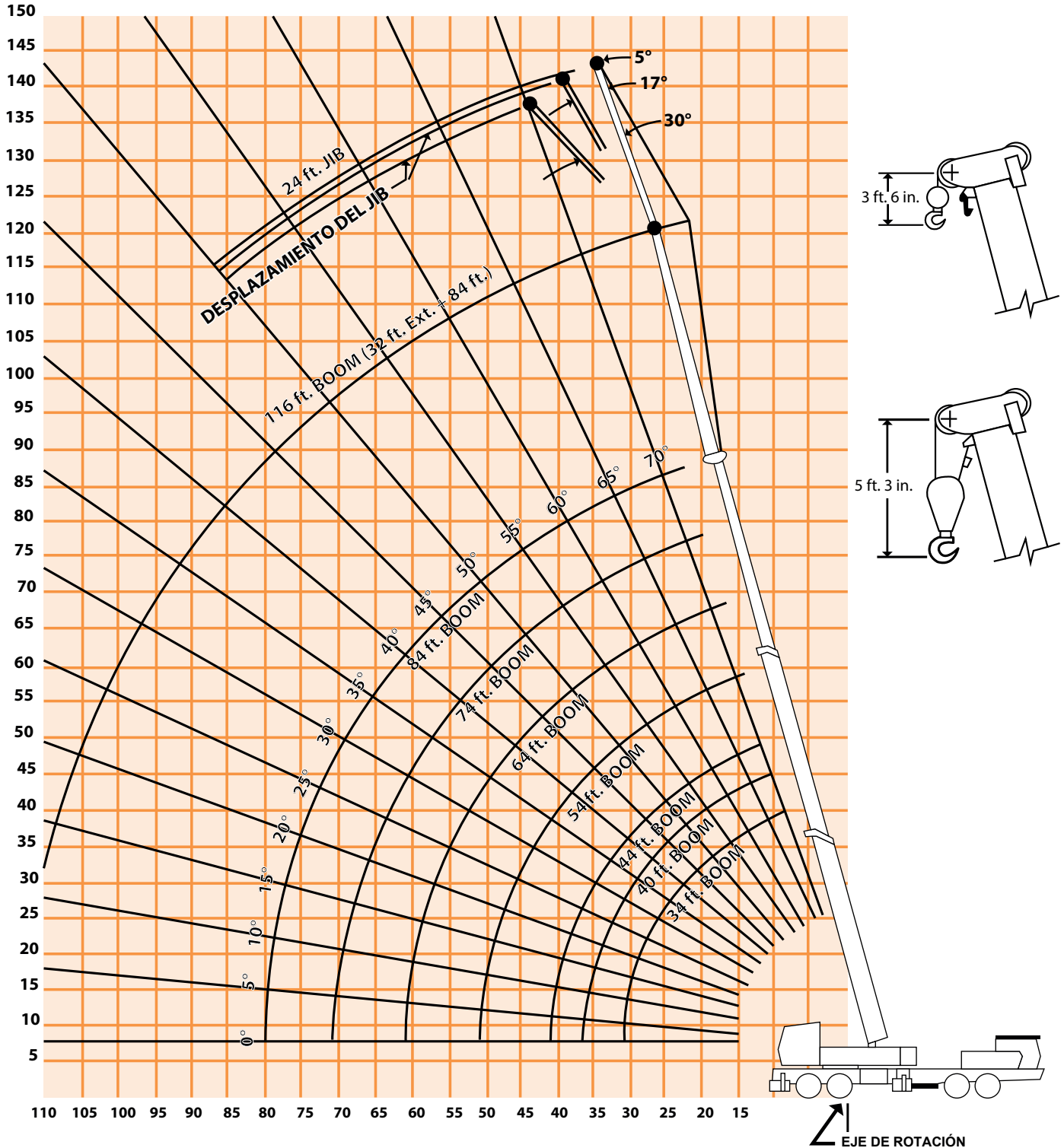
A6-829-002748 & -002760

Diagrama de Elevación

Modelo TMS475

50 TON

R50-A



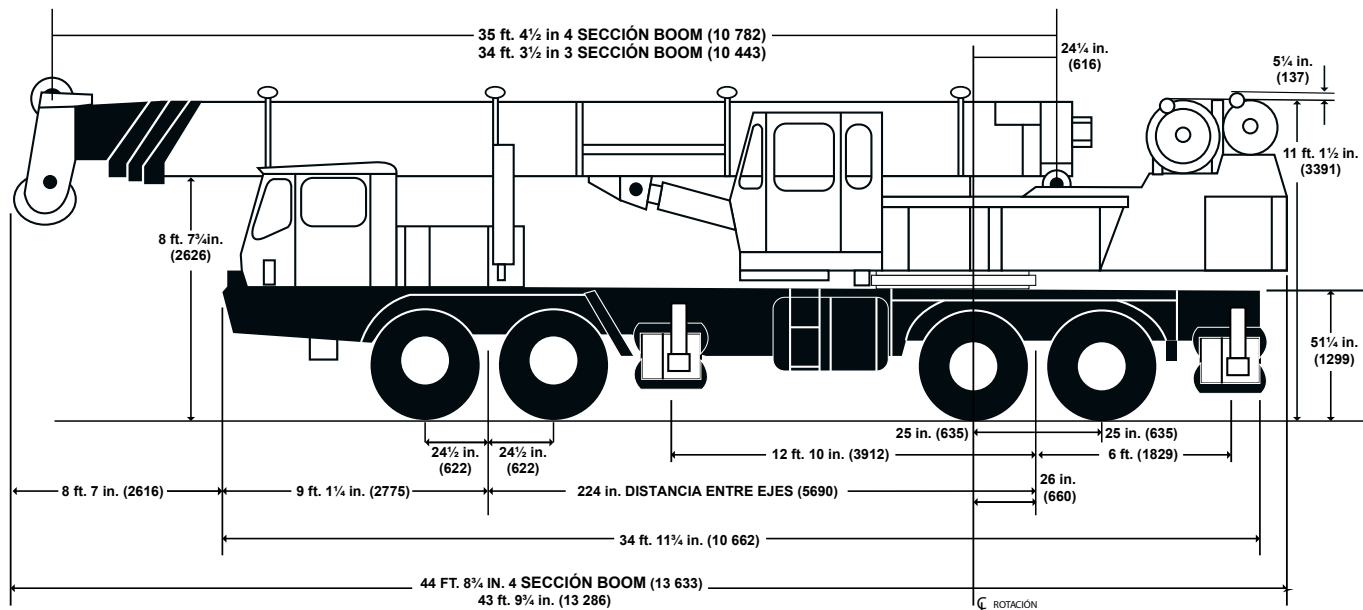
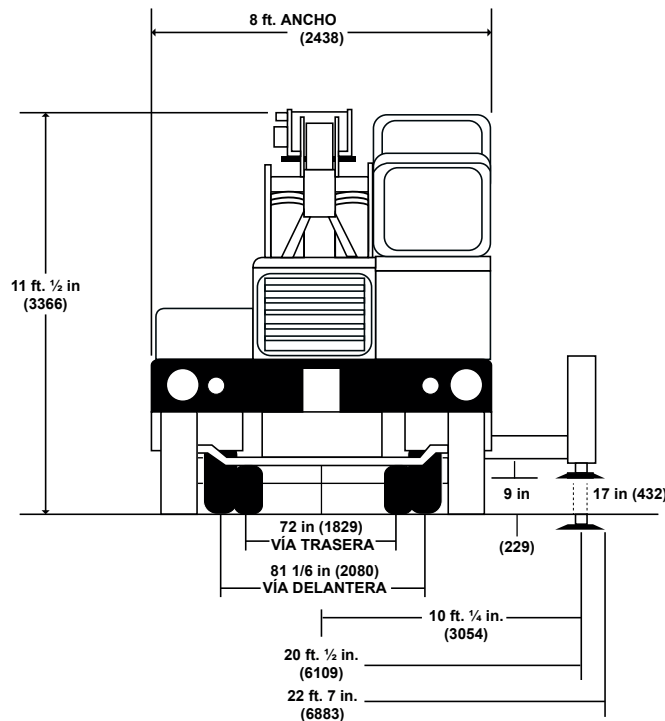
Dimensiones

Modelo TMS475

50 TON

R50-A

ALTURA MÁXIMA.	ANCHO MÁXIMO.	EXT. ESTABILIZADORES	ESTABILIZADORES RANGO COMPLETO	LARGO MÁXIMO.
3.40 mts	2.43 mts	2.30 mts	5.73 mts	10.66 mts



Glosario

Boom = Brazo Hidráulico Telescópico
Jib = Plumín (brazo)
Main = Principal
Power Pin. Fly = Clavija de alimentación eléctrica
Offset = Desplazamiento
Winch = Malacate / Cabrestante

Unidades de medidas

cc = Centímetros cúbicos
ft = Pies
g = Grados
In = Pulgadas
kg = Kilogramos
kPa = Kilopascales
lb = Libras
m = Metros
mm = Milímetros
psi = Libras por pulgada cuadrada
ton = Toneladas